

Spacetherm[®] Cold Bridge Strip

THERMAL INSULATION

OVERVIEW

Spacetherm CBS (Cold Bridge Strip) prevents cold bridging through a component or element of a structure, and consists of Spacetherm A1 insulation encapsulated in polyethylene. Spacetherm CBS can be supplied without encapsulation or tape for applications where the enhanced fire performance is required. Spacetherm CBS is an ideal choice for timber or steel frame structures and on request, can be cut to a variety of widths to suit different applications. In addition to timber and steel structures, it can also be used in other applications where cold bridging is an issue.

KEY FEATURES

- Thin thermal bridge insulation ideal for timber or steel frame structures.
- Fully encapsulated.
- Class leading performance.
- Constant long term thermal performance 50 years +.
- Available to any width or thickness.
- Non-hazardous material.

INSTALLATION

Peel off release paper to temporarily adhere to structure where required.

CUTTING

Spacetherm CBS can be cut using scissors or knife. Care should be taken that cutting blades are kept sharp, if using a knife, the angle between the blade and the Spacetherm CBS should be kept as low as possible. It is advisable to re-seal the ends with tape after cutting is complete.

FIXINGS

Spacetherm CBS is supplied with double sided adhesive tape for ease of installation. Spacetherm CBS can be applied to either timber or metal framing systems.

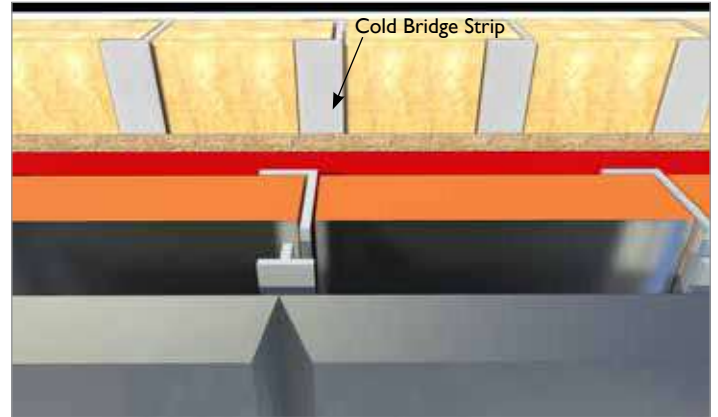


Image showing Spacetherm CBS applied to a timber frame structure

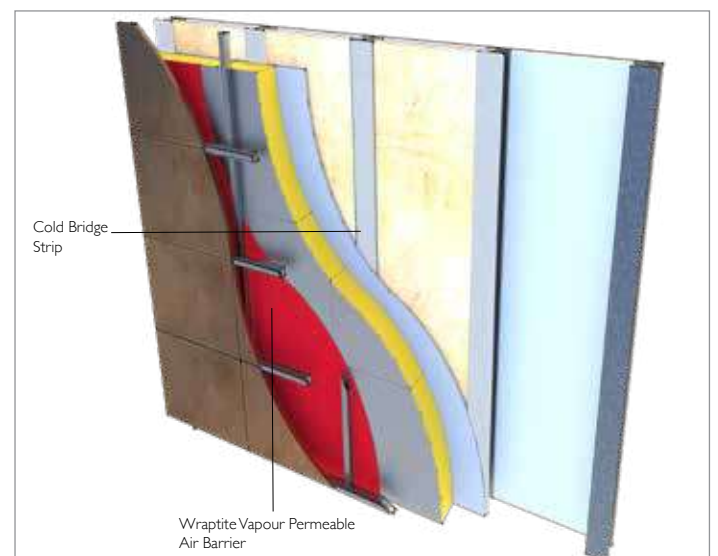


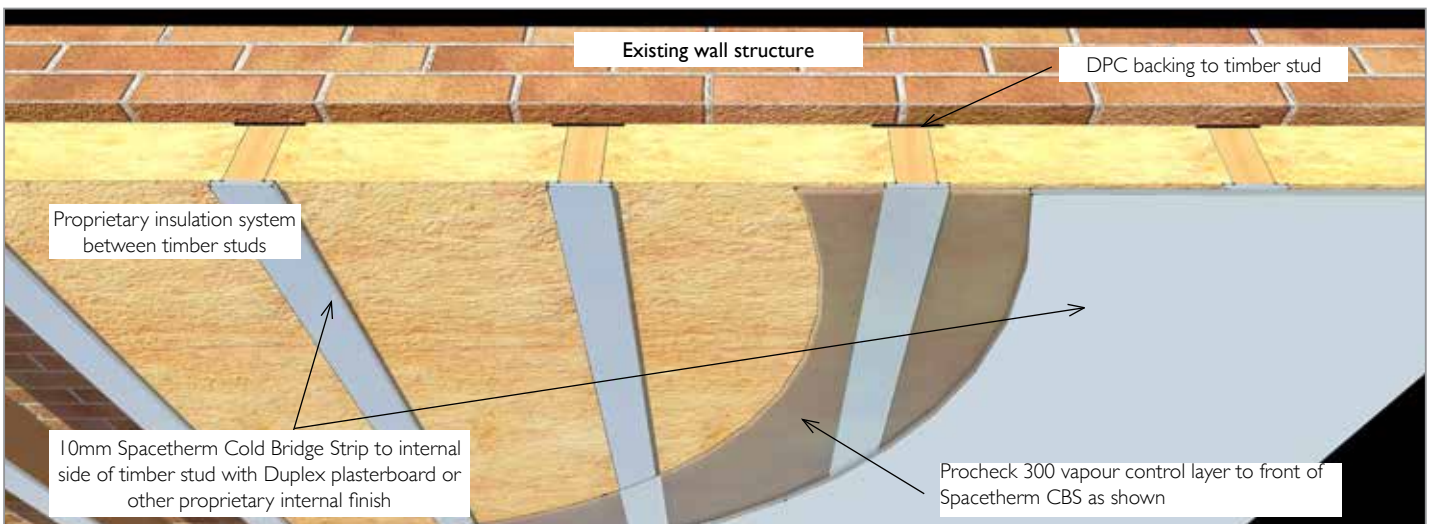
Image showing Spacetherm CBS applied to a metal frame structure

HEALTH & SAFETY

Spacetherm CBS and in particular the dust produced when cutting and handling the material may cause drying of the skin and therefore gloves and dust masks should be worn when handling the material. Ensure the working space is well ventilated and when necessary appropriate personal protection equipment should be used.

PHYSICAL PROPERTIES	RESULT
Spacetherm CBS length	1.2m or 2.4m
Thickness	10mm or 20mm
Width	38, 50, 75 & 100mm
K-Factor: Aerogel	0.0195 W/mK
Reaction to Fire: Aerogel	Class A1 (insulation only)

For other thicknesses, or for U-value calculations for your project, please contact Technical Services on 01250 872261 or technical@proctorgroup.com



Drawing showing Spacetherm CBS breaking thermal bridge between timber studs and internal finish

