

One of the **isomass**
high performance
systems range

isocheck™

Impact Mat 200 System



IMPACT & AIRBORNE IMPROVEMENT SYSTEM

- Refurbishments
- Conversions
- Listed buildings requiring minimal structural change



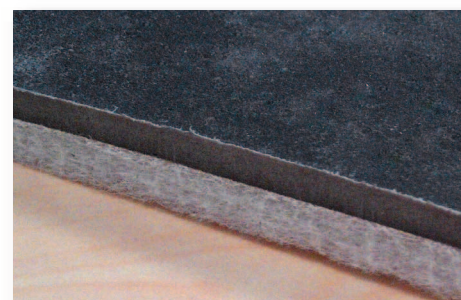
Taking the *mystery* out of Acoustics

DESCRIPTION

- ❑ The Isocheck Impact Mat 200 system is designed to reduce impact and airborne sound transmission through timber floors.
- ❑ Isocheck Impact 200 Impact Mat consists of an 8mm Isofiba / barrier mat composite.
- ❑ When installed as part of a complete party floor construction the system enables a timber floor to meet the sound transmission standards of Approved Document E 2003 and amendments in 2004, 2010, 2013 & 2015.

APPLICATIONS

- ❑ To be used as a single layer or double layer over floorboards or concrete decks for conversions, refurbishments or listed buildings requiring minimal structural change with a new plasterboard or existing lath and plaster ceiling.
- ❑ A single layer can also be used draped over joists and beneath floorboards.



isocheck™
acoustic insulating products

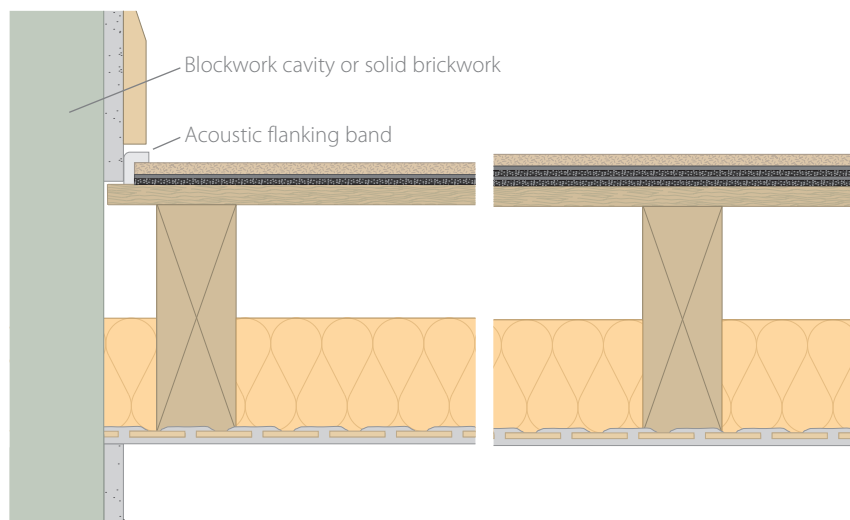
Product data

Overall size:	1200mm x 1000mm
Resilient layer thickness:	8mm
Resilient layer:	Isofiba / barrier composite
Weight:	8.0kg/m ²

Performance

Laboratory performance of Impact Mat 200 achieved

33dB ΔL_w for a single layer, **40dB** ΔL_w for a double layer and **18dB** ΔL_w for a single layer with a timber laminate floor over. Site tests have also indicated the Airborne performance is also improved by **1** to **2dB** $D_{nT,w} + C_{tr}$.



- ❑ Finished floor material (for example, engineered timber).
- ❑ one layer (left detail) or two layers (right detail) of Isocheck Impact Mat 200.
- ❑ floorboards.
- ❑ 175mm x 50mm timber joists @ 450mm centres.
- ❑ 100mm 45Kg/m³ insulation between joists.
- ❑ lath and plaster ceiling or 30mm o/a double boarded ceiling (min. 20kg/m²) fixed to timber joists.
- ❑ Acoustic flanking band reduces impact vibration leaking via structural walls and assists in reducing airborne sound paths (on both constructions).
- ❑ Note: currently only tested worst case scenario with direct fixed ceilings.

Every effort has been taken in the preparation of this sheet to ensure the accuracy of representations contained herein. Recommendations as to the use of materials, construction details and methods of installation are given in good faith and relate to typical situations. However, every site has different characteristics and reliance should not be placed upon the foregoing recommendations. Advice can be given as to specific applications of the products, upon request to isomass building products.

SPECIFICATION

The acoustic floor shall be:

- ❑ Isocheck Impact Mat 200, supplied by Isomass Ltd. Unit 14 Papworth Business Park, Stirling Way, Papworth Everard, Cambridgeshire CB23 3GY and installed in accordance with manufacturer's instructions / recommendations.

INSTALLATION

- ❑ Lay Isocheck Impact Mat 200 over the entire level floor with all joints butted.
- ❑ Most t&g or interlocking laminate panel floor finishes can be laid directly onto Isocheck Impact Mat 200 although a 3mm layer of plywood over the Mat would improve performance and stability. If in doubt please contact us with the floor specification.
- ❑ Finished timber floors should be isolated from the skirting using Isocheck Acoustic Flanking Band.
- ❑ Full installation instructions are available and must be used in conjunction when laying this floor system.

For advice on treatment of services and penetrations, consult our brochure or visit our website.

Please ask Isomass for guidance when considering the weight of any new blocks which will be incorporated in a wall directly surrounding a timber separating floor.