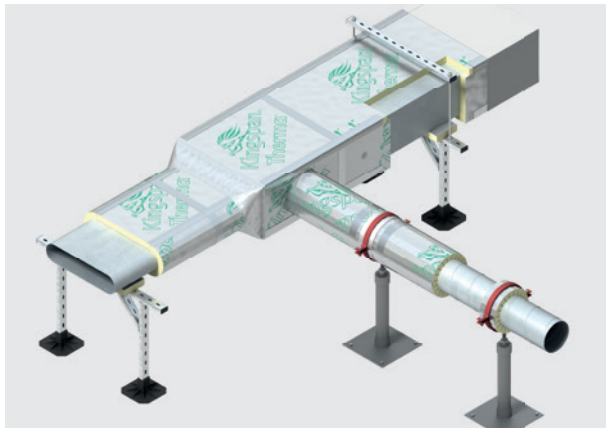


Insulation



# Kingspan **Therma**<sup>TM</sup> Duct Insulation

Rigid Insulation for Outdoor Rectangular, Circular and Flat Oval HVAC Ductwork



Fibre-free  
Core

  
**Kingspan**<sup>®</sup>

# Kingspan Therma™ Duct Insulation

## Overview

Kingspan Therma™ Duct Insulation is a high performance thermal insulation designed for use on rectangular, circular and flat oval ductwork in HVAC / building services applications. It can be used to insulate ductwork and associated equipment outdoors, operating within the temperature range of - 20°C to + 80°C.

Kingspan Therma™ Duct Insulation is suitable for both new build and refurbishment projects in the residential, commercial, institutional, light industrial and leisure sectors.

Moreover, it is especially suitable for high specification projects where non-fibrous insulants may be preferred, for example: in the food, beverage and pharmaceutical industries; and clean air and hygiene controlled environments.

Kingspan Therma™ Duct Insulation is CE marked in conformance with BS EN 14308: 2009+A1: 2013 (Thermal insulation products for building equipment and industrial installations. Factory made rigid polyurethane foam (PUR) and polyisocyanurate foam (PIR) products. Specification) and a Declaration of Performance and Declaration of Conformity are available to download from [www.kingspanductwork.co.uk/tdi](http://www.kingspanductwork.co.uk/tdi).



The insulation core is manufactured with a blowing agent that has low Ozone Depletion Potential (ODP) and low Global Warming Potential (GWP)  $\leq 5$ .

Kingspan Therma™ Duct Insulation has a 90% (or greater) closed cell structure and a compressive strength that typically exceeds 140 kPa at 10% compression. Solutions are available to accommodate the surface curvature of circular and flat oval ductwork with an outside diameter (O.D.) of 80 mm or greater.

The rigid nature of Kingspan Therma™ Duct Insulation enables the specified thickness of insulation to be maintained at the corners of rectangular ductwork and at locations where HVAC / building services equipment is specified. Non-rigid glass and rock mineral fibre duct wrap products, on the other hand, risk being overstretched and compressed in these locations, potentially leading to a reduction in thermal performance.

Its rigidity also enables the straightforward application of vapour barrier tape and finishing materials which, in turn, facilitates the creation of a continuous and fully sealed vapour barrier.

This can provide a neater, closer fitting finish than that achievable with non-rigid glass or rock mineral fibre duct wrap products.

## Kingspan Therma™ Duct Insulation

Kingspan Therma™ Duct Insulation comprises a high performance fibre-free rigid thermoset polyisocyanurate (PIR) insulation core, faced on both sides with a low emissivity composite foil autohesively bonded to the insulation core during manufacture.

## Insulation on Curved Surfaces

Slotted Kingspan Therma™ Duct Insulation is recommended for curved surfaces  $\geq 350$  mm  $\varnothing$  and Kingspan Tarec™pir Pipe Insulation is recommended for curved surfaces  $< 350$  mm  $\varnothing$ .

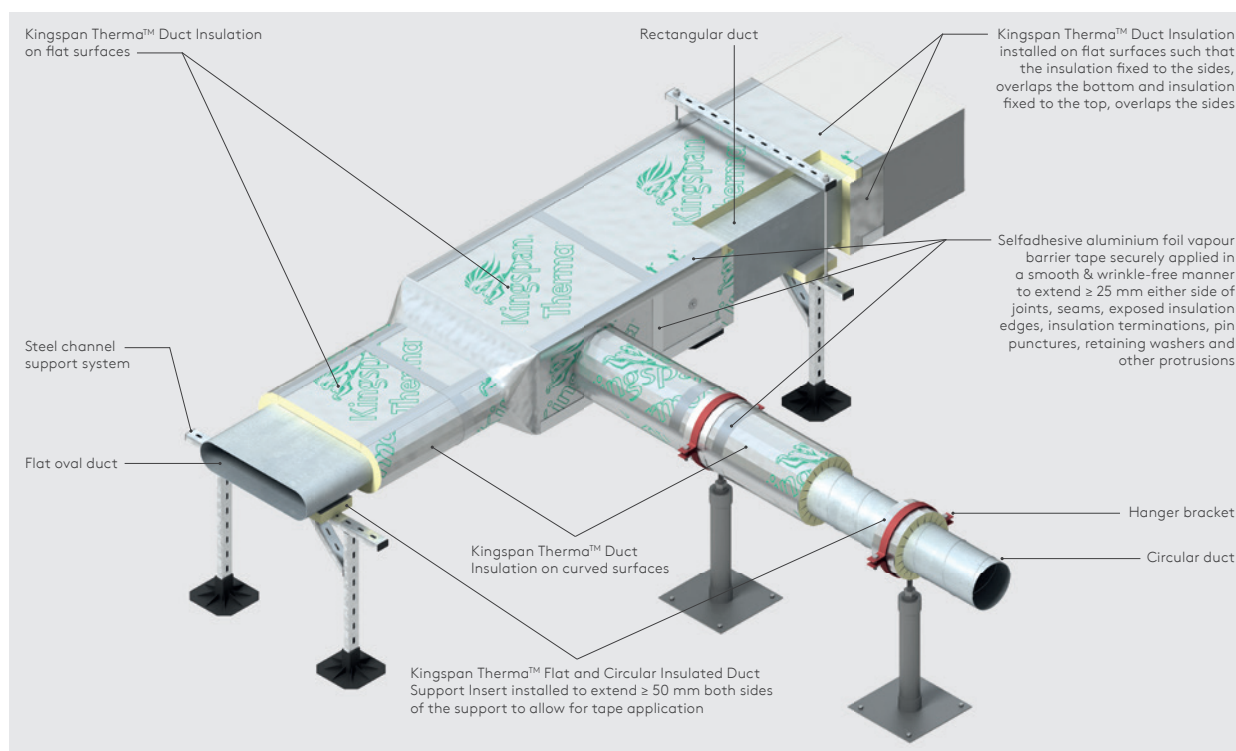


Figure 1: Fixing Details

# Kingspan Therma™ Duct Insulation

## Kingspan Therma™ Insulated Duct Support Inserts

Load-bearing insulation inserts can be fabricated on site from standard Kingspan Therma™ Duct Insulation boards to suit the whole range of duct dimensions and insulation thicknesses. They can withstand the loads imposed by HVAC / building services ductwork at locations where ductwork supports and hangers are installed.

Kingspan Therma™ Flat Insulated Duct Support Inserts are flat rectangular strips of Kingspan Therma™ Duct Insulation. They are used with rectangular and flat oval ductwork.

Kingspan Therma™ Circular Insulated Duct Support Inserts are curved strips of Kingspan Therma™ Duct Insulation or Tarec™pir Pipe Insulation. They are not designed to support the compressive loads imposed by pipework carrying water or other liquids and should not be used in such applications.

Kingspan Therma™ Insulated Duct Support Inserts enable a more consistent run of ductwork insulation, by allowing specified insulation levels to be maintained at ductwork support and hanger locations.

Interruptions in insulation continuity, by materials with significantly worse thermal conductivities, or no insulation at all, can result in thermal bridging (sometimes referred to as cold bridging). This can reduce the efficacy of the insulation through consequential heat losses / gains. The use of non-insulated duct support inserts can result in up to 5% of the total area of a ductwork system being seriously under-insulated.

Kingspan Therma™ Duct Insulation and Kingspan Therma™ Insulated Duct Support Inserts, where appropriately taped and sealed, can facilitate the creation of a continuous and fully sealed vapour barrier. This is particularly important for ductwork operating at below ambient temperatures, or in high relative humidity environments and could be considered good practice.

## Thermal Properties

The thermal conductivities ( $\lambda$ -values) detailed below are quoted in accordance with BS EN 14308: 2009 + A1: 2013 (Thermal insulation products for building equipment and industrial installations - Factory made rigid polyurethane foam (PUR) and polyisocyanurate foam (PIR) products).

Temperature (°C)	Thermal Conductivity (W/mK)
- 20°C	0.022
+ 10°C	0.023
+ 19°C	0.023
+ 25°C	0.023
+ 50°C	0.026
+ 80°C	0.030

Table 1: Thermal Conductivity of Kingspan Therma™ Duct Insulation

## Space Saving

Thin insulation can contribute towards space savings. Increased space can facilitate installation, cleaning and maintenance operations in confined areas. Furthermore, thinner insulation can result in a reduction in surface area and therefore savings in finishing materials.

## Compliance

Kingspan Therma™ Duct Insulation is available in thicknesses that meet or exceed the maximum permissible heat transfer requirements, for insulated heating, cooling and dual purpose ductwork, as defined by BS 5422 (Method for specifying thermal insulating materials for pipes, tanks, vessels, ductwork and equipment operating within the temperature range -40°C to +700°C) and by the Non-Domestic Building Services Compliance Guide (NDBSCG).

Ductwork Type	Heat Transfer	Thickness
Cooling and Dual Purpose	- 6.45 W/m²	40 mm
Heating	16.34 W/m²	20 mm

Table 2: Thickness of Kingspan Therma™ Duct Insulation that meet the heat transfer requirements detailed in NDBSCG

## Environmental Impact & Responsible Sourcing

### Environmental Product Declaration (EPD)

The product is supported with an Environmental Product Declaration (EPD), providing detailed information about its whole life environmental performance. The EPD document and all other product certification can be downloaded from [www.kingspanductwork.co.uk](http://www.kingspanductwork.co.uk).

### Responsible Sourcing

Kingspan Therma™ Duct Insulation produced at Kingspan Insulation's Pembrokeshire and Selby manufacturing facilities, are certified to BES 6001 'Excellent'.

NB The above information is correct at the time of writing. Please confirm at the point of need by contacting Kingspan Technical Insulation's Technical Service Department.

## Sustainability & Responsibility

Kingspan Technical Insulation has a long-term commitment to sustainability and responsibility: as a manufacturer and supplier of insulation products; as an employer; as a substantial landholder; and as a key member of its neighbouring communities.

Further information can be found at [www.kingspaninsulation.co.uk/sustainabilityandresponsibility](http://www.kingspaninsulation.co.uk/sustainabilityandresponsibility).

## Fire Performance

Kingspan Therma™ Duct Insulation has a European fire classification of E to BS EN 13501-1: 2018 (Fire classification of construction products and building elements. Classification using data from reaction to fire tests) and achieves Class 1 results to BS 476-7: 1997 (Fire tests on building materials and structures. Method of test to determine the classification of the surface spread of flame of products).

Further details of the fire performance of Kingspan Technical Insulation products may be obtained from the Kingspan Technical Insulation Technical Service Department.

---

# Sitework

---

## Introduction

In addition to the information given in this section, it is recommended that reference is also made to BS 5970: 2012 (Thermal insulation of pipework, ductwork, associated equipment and other industrial installations in the temperature range of - 100°C to + 870°C - Code of practice).

## Installation

- Care should be taken when handling and transporting insulation products to prevent physical damage.
- During the installation of galvanised steel ductwork, the contractor should place insulated support inserts between ducts and supports, to extend no less than 50 mm both sides of the support to allow for tape application. Insulation at supports should be with a product of suitable compressive strength to carry the loads transmitted to the supports and should be of the same thickness as that of the adjacent duct insulation.
- In addition to the surfaces of ductwork and associated HVAC equipment - flanged joints, stiffeners, fasteners and connections must also be effectively insulated in order to reduce heat loss, heat gain and / or to control condensation.
- To facilitate inspection, testing, adjustment, balancing, maintenance and cleaning, a removable and fully vapour sealed piece of insulation, of sufficient size, must be provided at access door locations, if the door is not already pre-insulated.
- Insulation must not be installed at locations where the ductwork penetrates fire resistance rated walls, partitions, floors and ceiling-floor assemblies. Consideration should be given to current Buildings Regulations / Standards with regard to the requirements for and provision of, fire stops.
- Before being insulated, surfaces must be made clean, dry and free from grease, dust, dirt, loose rust, scale and all other foreign matter.
- The insulation should be installed to achieve a close fit between the insulation and substrate, as well as between insulation joints.
- The ingress of moisture, or other foreign matter, either into the insulation or between the insulation and substrate, should be prevented during installation.
- When insulating rectangular ductwork, the thickness of insulation that has been specified should be maintained at all four corners of the duct.
- On horizontally orientated ducts, the insulation fixed to the sides overlaps the bottom and insulation fixed to the top overlaps the sides (see Figure 1 on page 2 of this document).
- The insulation must be securely fixed to the substrate by means of adhesive, by mechanical fixings or by a combination of both.
- A compatible high-strength contact adhesive, must be applied in accordance with the manufacturer's recommendations. For suitable adhesives, please contact the Kingspan Technical Insulation Technical Service Department.
- Bands (preferably aluminium) and matching seals are used as additional mechanical means on circular ductwork.

The banding must be no less than 15 mm wide and should be applied circumferentially at least three per section of insulation or at maximum 400 mm centres.
- On rectangular ductwork the selection of compatible mechanical fixings will be dependent upon: the substrate material; operating temperatures, size and orientation of the duct and the duct wall; and the degree of vibration to which the duct is subjected during operation.
- Mechanical fixings, if used, must be corrosion resistant, capable of sustaining the calculated tensile dead load perpendicular to the duct wall and securely fixed so that they do not detach from the duct during its service life.
- Mechanical fixings should be positioned so that they are neatly and evenly distributed under each piece of insulation. They should be located no less than 75 mm and no greater than 150 mm, from insulation edges and corners.

---

## Vapour Barrier

- The vapour barrier over the insulation should be continuous and fully sealed.
- A high strength self-adhesive aluminium foil vapour barrier tape should be applied to all discontinuities in the vapour barrier. This includes those between insulated duct support inserts and abutting duct insulation, joints, seams, exposed insulation edges, insulation terminations, pin punctures, retaining washers and other protrusions.
- The self-adhesive vapour barrier tape should be applied in a smooth and wrinkle-free manner. It should extend no less than 25 mm either side of joints, seams, insulation edges and terminations, as well as in all directions of pin punctures, retaining washers and other protrusions.
- To ensure successful adhesion, all surfaces to receive self-adhesive vapour barrier tape should be made clean, dry and free from grease, dust, dirt and all other foreign matter prior to application. If required, surfaces may be primed with a thin coat of compatible high-strength contact adhesive. A gentle pressure may also be exerted using a soft spatula tool, whilst applying the tape.

# Sitework

## Protection & Finishes

- The insulation must be adequately protected with an additional weatherproof and water / vapour tight finish that shields against the effects of wind and sunlight. The finish must also be capable of providing suitable protection if at risk of being subjected to mechanical or physical abuse, e.g. birds. Suitable finishes include: aluminium or stainless steel sheet; aluminium-zinc alloy coated steel sheet; heavy-duty, self-adhesive laminate; synthetic elastomeric jacketing, systems; reinforcing glass / synthetic cloth embedded, between two coats of appropriate coating; or UV resistant glass reinforced polyester / epoxy (GRP / GRE) cladding systems (all applied in accordance with the manufacturer's recommendations and the project's specification requirements).
- When installing an additional finish over the standard factory-applied low emissivity composite foil facing, care must be taken to preserve the integrity of the vapour barrier at all times.

## Identification of Services

- Both insulated and non-insulated services should be clearly identifiable.
- The identification system should be in accordance with the project specification e.g. BS 1710: 2014 (Specification for identification of pipelines and services).
- The identification system and its method of application should be compatible with the finish. They should also be suitable for the operating and ambient conditions.



## General

### Cutting

- Manual cutting of the insulation boards should be carried out either by using a fine toothed saw, or by scoring with a sharp knife, snapping the board over a straight edge and then cutting the facing on the other side.
- Ensure accurate trimming to achieve close-butting joints and continuity of insulation.
- Automated computer aided cutting may be carried out using CNC blade / router machinery.

### Availability

- Kingspan Therma™ Duct Insulation is available through specialist insulation distributors and selected Delivery Partners throughout the UK and Ireland.

### Packaging & Storage

- The polyethylene packaging of Kingspan Insulation products, which is recyclable, should not be considered adequate for outdoor protection.
- Insulation materials should be adequately protected from the weather, humidity, abrasive matter, contaminants and all other foreign matter.
- Ideally, products should be stored inside a building. If, however, outside storage cannot be avoided, they should be stored in a dry atmosphere, clear of the ground, out of direct sunlight and covered with an opaque and weatherproof material. Products that have been allowed to get wet should not be used.
- Insulation products should be maintained in good condition throughout the duration of the works and should not be unpacked onsite until required for immediate use. They should be returned to storage at the end of each workday.

### Health & Safety

- Kingspan Therma™ Duct Insulation is chemically inert and safe to use.
- A Safety Information Data Sheet is available from [www.kingspanductwork.co.uk/tdi](http://www.kingspanductwork.co.uk/tdi).

NB The reflective surfaces on this product are designed to enhance its thermal performance. As such, it will reflect light as well as heat, including ultraviolet (UV) light. Therefore, if the product is being installed during very bright or sunny weather, it is advisable to wear UV protective sunglasses or goggles and if the skin is exposed for a significant period of time, to protect the bare skin with a UV block sun cream. The reflective facing used on this product can be slippery underfoot when wet. Therefore, it is recommended that any excess material should be contained to avoid a slip hazard. Warning - do not stand on or otherwise support your weight on the product.



---

# Contact Details

---

## UK

**Kingspan Insulation Ltd**  
**T/A Kingspan Technical Insulation**  
Pembroke | Leominster  
Herefordshire | HR6 9LA

T: +44 (0) 1544 388 601  
F: +44 (0) 1544 388 888  
E: [info@kingspaninsulation.co.uk](mailto:info@kingspaninsulation.co.uk)  
[www.kingspanductwork.co.uk](http://www.kingspanductwork.co.uk)

For individual department contact details please visit  
[www.kingspanductwork.co.uk](http://www.kingspanductwork.co.uk)

---

## Ireland

**Kingspan Insulation Ltd**  
Castleblayney | County Monaghan

T: +353 (0) 42 979 5000  
F: +353 (0) 42 975 4299  
E: [info@kingspaninsulation.ie](mailto:info@kingspaninsulation.ie)  
[www.kingspaninsulation.ie](http://www.kingspaninsulation.ie)

For individual department contact details please visit  
[www.kingspaninsulation.ie/contact](http://www.kingspaninsulation.ie/contact)

Kingspan Insulation Ltd. reserves the right to amend product specifications without prior notice. Product thicknesses shown in this document should not be taken as being available ex-stock and reference should be made to the current Kingspan Insulation price-list or advice sought from Kingspan Insulation's Customer Service Department. The information, technical details and fixing instructions etc. included in this literature are given in good faith and apply to uses described. Recommendations for use should be verified for suitability and compliance with actual requirements, specifications and any applicable laws and regulations. For other applications or conditions of use, Kingspan Insulation offers a Technical Advisory Service, the advice of which should be sought for uses of Kingspan Insulation products that are not specifically described herein. Please check that your copy of this literature is current by contacting the Kingspan Insulation Marketing Department.

© Kingspan and the Lion Device are Registered Trademarks of the Kingspan Group plc in the UK, Ireland and other countries. All rights reserved.

TM Therma is a Trademark of the Kingspan Group plc.

Registered in England & Wales, No. 01882722. Registered Office: Pembroke, Leominster, Herefordshire HR6 9LA UK. VAT GB428602456.

Registered in Ireland, No. 54621. Registered Office: Bree Industrial Estate, Castleblayney, Co. Monaghan, Ireland. VAT IE4575069I.

