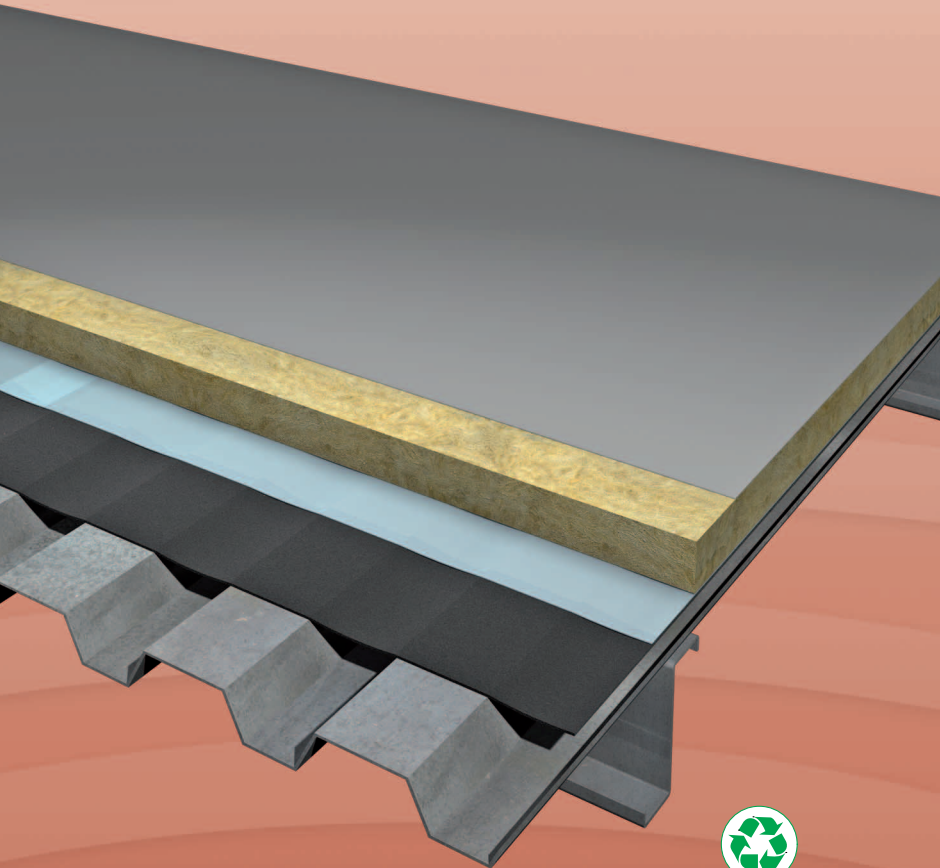


# isocheck™

## Barrier Mat System for Roofs



Recyclable  
post-use

### AIRBORNE IMPROVEMENT SYSTEM FOR METAL ROOFS

- Refurbishments
- Conversions



#### DESCRIPTION

- ❑ Isocheck weight-enhanced Barrier Mat is primarily used for its airborne, low-frequency damping properties in metal roofs.
- ❑ Weight-enhanced Isocheck Barrier Mat 5kg is constructed of high-density barium sulphate loaded thermoplastic polymer, plasticized with phthalate esters and containing mineral fillers. It is black in colour, bitumen free, ecologically neutral and recyclable.
- ❑ Barrier Mat is ideal for projects when looking to improve airborne sound reduction with minimal increase in height and depth.

#### APPLICATIONS

- ❑ Laid directly over a profiled metal deck in a flat roof or built up metal standing seam roofing.
- ❑ Can also be used in timber floors and walls (see separate data sheet).



Taking the *mystery* out of Acoustics

## Product data

Overall size:	1.2m x 2.0m • 1.2m x 5.0m
Thickness:	2 - 3mm
Weight:	5.0kg/m <sup>2</sup>
Hardness:	90 Shore A
Tensile strength:	2.6Mpa
Elongation at Break:	90%
Flammability:	FMVSS 302 self-extinguishing
Operating temp range:	-30°C to +65°C (some softening) Thermally stable for periods up to +93°C

## SPECIFICATION

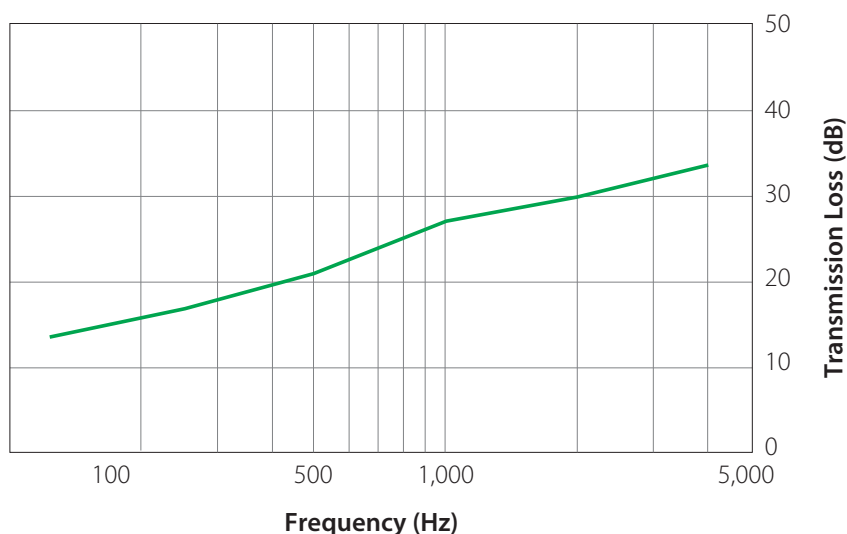
The acoustic floor shall be:

- Isocheck Barrier Mat, supplied by  
Isomass Ltd. Unit 14 Papworth  
Business Park, Stirling Way,  
Papworth Everard, Cambridgeshire  
CB23 3GY and installed in  
accordance with manufacturer's  
instructions / recommendations.

## Performance

Isocheck Barrier Mats contain a high performance material that has been acoustically tested at a UKAS certified independent test laboratory.

Tested and Rated according to: BS EN ISO 717-1:2013  
BS EN ISO 10140-2:2010



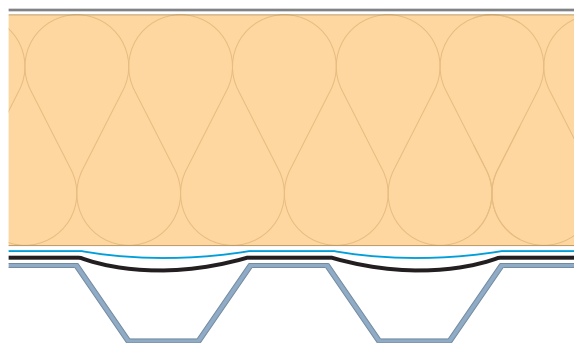
## Transmission Loss Curve, 5kg/m<sup>2</sup>

(BS EN ISO 10140-2:2010)

Mean Sound Reduction Index, SRI = 22db

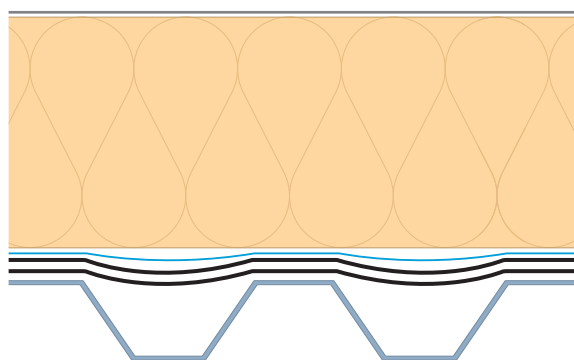
# airborne improvement system

## Applications



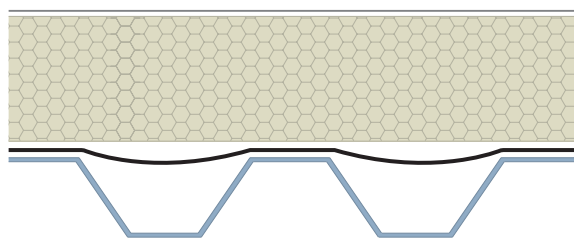
- ❑ 1.5mm membrane.
- ❑ 150mm dual density mineral fibre insulation.
- ❑ 250 micron vapour control layer (VCL).
- ❑ Isocheck Barrier Mat 5kg draped between valleys of profiled steel deck.
- ❑ Profiled steel deck.

$R_w (C;C_{tr}) = 39\text{dB}$



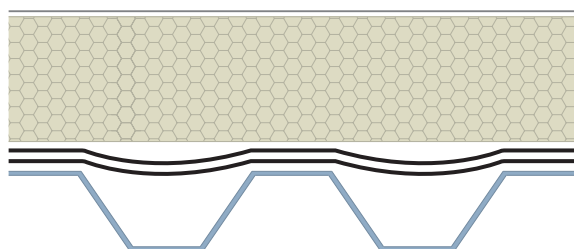
- ❑ 1.5mm membrane.
- ❑ 150mm dual density mineral fibre insulation.
- ❑ 250 micron vapour control layer (VCL).
- ❑ 2 layers Isocheck Barrier Mat 5kg draped between valleys of profiled steel deck.
- ❑ Profiled steel deck.

$R_w (C;C_{tr}) = 42\text{dB}$



- ❑ 1.0mm membrane.
- ❑ 80mm PIR 32kg/m³ insulation.
- ❑ Isocheck Barrier Mat 5kg draped between valleys of profiled steel deck.
- ❑ Profiled steel deck.

$R_w (C;C_{tr}) = 31\text{dB}$



- ❑ 1.0mm membrane.
- ❑ 80mm PIR 32kg/m³ insulation.
- ❑ 2 layers Isocheck Barrier Mat 5kg draped between valleys of profiled steel deck.
- ❑ Profiled steel deck.

$R_w (C;C_{tr}) = 34\text{dB}$

Every effort has been taken in the preparation of this sheet to ensure the accuracy of representations contained herein. Recommendations as to the use of materials, construction details and methods of installation are given in good faith and relate to typical situations. However, every site has different characteristics and reliance should not be placed upon the foregoing recommendations. Advice can be given as to specific applications of the products, upon request to isomass building products.

## INSTALLATION

- ❑ Lay Barrier Mat directly over the steel deck, across the line of the profiles (as shown).
- ❑ The metal decking must be clean and dry.
- ❑ Overlap Barrier Mat by 50mm min. at joints.
- ❑ Fit a polythene VCL between the Barrier mat and the insulation. A mechanically fastened single ply membrane should then be laid in accordance with manufacturer's instructions / recommendations.
- ❑ Form day joints at the conclusion of each section of work to seal exposed edges of the insulation and membrane.
- ❑ Install all components in accordance with BS 6229:2003 Flat roofs with continuously supported coverings. Code of practice.
- ❑ In most instances, the fixings for the membrane and insulation will mean no additional fixings for Barrier mat are required.
- ❑ Full installation instructions are available and must be used in conjunction when laying this system.

For advice on treatment of services and penetrations, consult our brochure or visit our website.

**isomass**<sup>®</sup>  
building acoustics

Isomass Limited, Unit 14 Papworth Business Park,  
Stirling Way, Papworth Everard, Cambridgeshire CB23 3GY

Tel: 0330 175 8228 • Fax: 01223 651 530

Email: [info@isomass.co.uk](mailto:info@isomass.co.uk) • [www.isomass.co.uk](http://www.isomass.co.uk)

**[www.isomass.co.uk](http://www.isomass.co.uk)**